

Assembly Instructions altimeter ALT-USB and ALT-LED in the rocket (class S1 and S5)

Below are shown examples of how to mount altimeter. Of course, everyone experienced modeler will have its own assembly.

Option 1

You should do a separate container for altimeter.

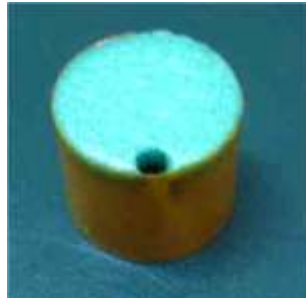
Internal minimum dimensions of the container.

For rockets with a diameter greater than 15mm: diameter 13,8mm; length 34 mm

For rockets with a diameter of less than 15 mm: diameter 10,8mm; length 46mm

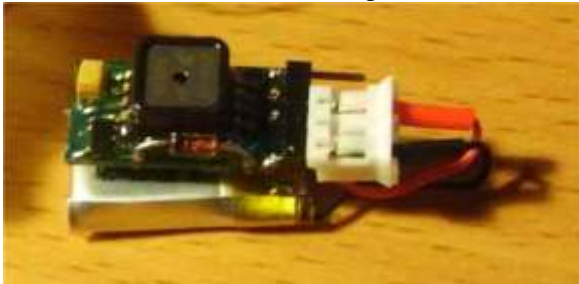


1. You should do two round caps of depron. Cut on the side of the hole with a diameter of approximately 3mm
2. Make two tubes. Tubes must have different diameters, so that they can put one into the other.

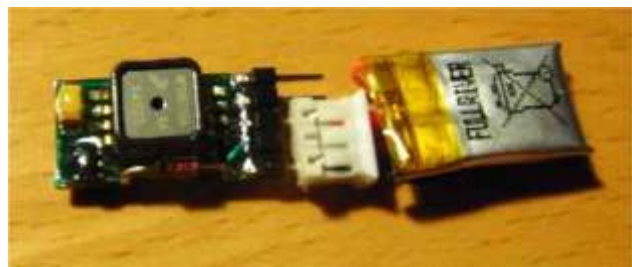


3. Connect the battery to the altimeter. Method of arrangement battery:

For rockets with a diameter greater than 15mm



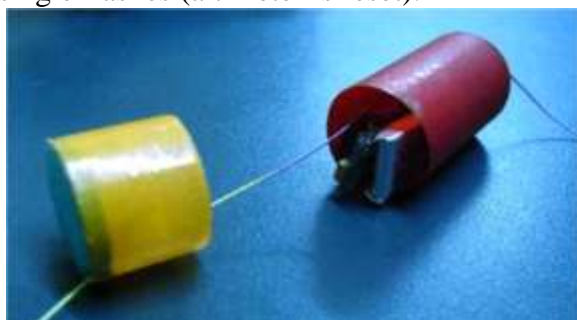
For rockets with a diameter of less than 15mm

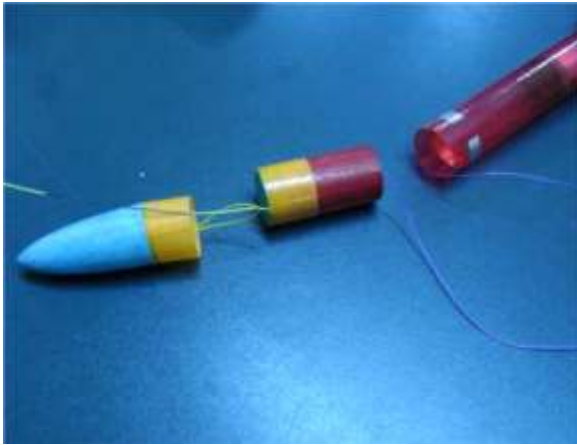


4. Drag the cord through the two tubes



5. Altimeter to insert the tube. Before inserting into the raket, you should make sure that the LED is blinking single flashes (altimeter is reset).

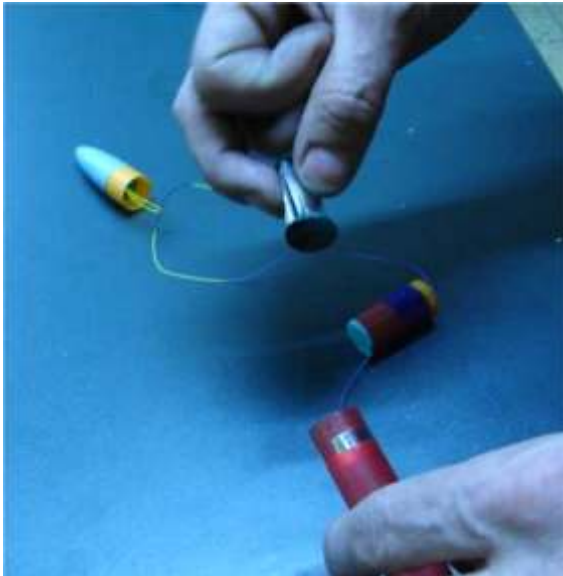




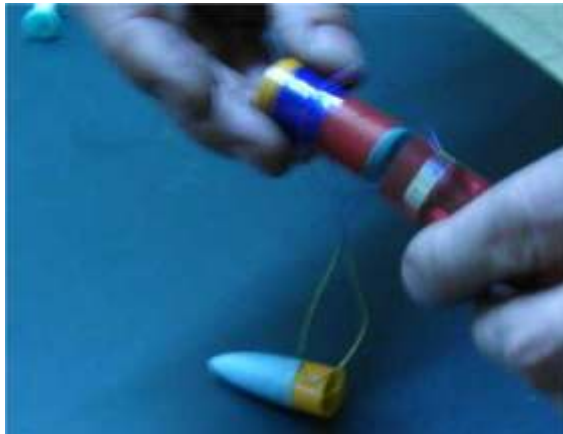
6. Connect the two halves of the container and glue tape.



7. Now, insert the plunger together with the tape inhibitory



8. Then insert the container



9. Push the container and fit the head racket



ADREL

Zakład Elektroniki
i Aparatury Przemysłowej
NIP: 679-100-89-74

30-701 Kraków
ul. Zabłocie 39

tel. +48501 607-607
fax: +4812 398-37-87
e-mail: adrel@adrel.com.pl
www.adrel.com.pl